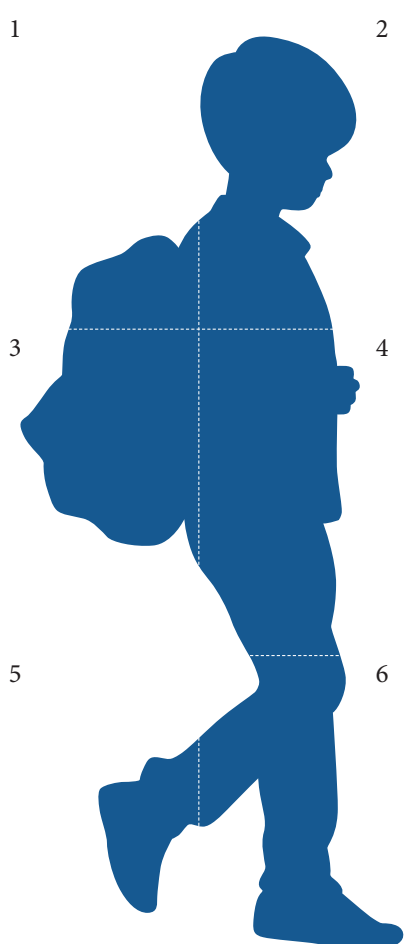




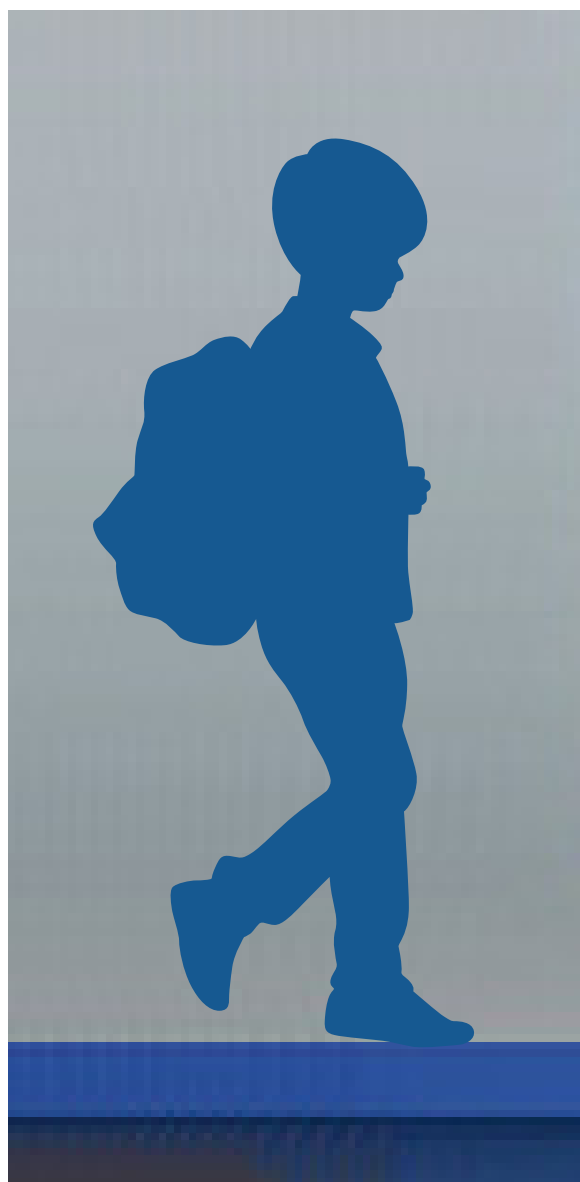
BLUE SILHOUETTE ASSEMBLY

1. Print out all sheets of paper.
2. Make note of the number in the top corner of each sheet of paper.
3. Assemble the 6 sheets of paper , see Sample 1.
4. Grab scissors and cut out the blue silhouette.
5. Place the cut sheets back in the original order, see Sample 1.
6. Tape the blue silhouette to the wall, see Sample 2.
7. Print out the survivor story or make your own.
8. Tape the survivor story onto the blue silhouette, see Sample 3.

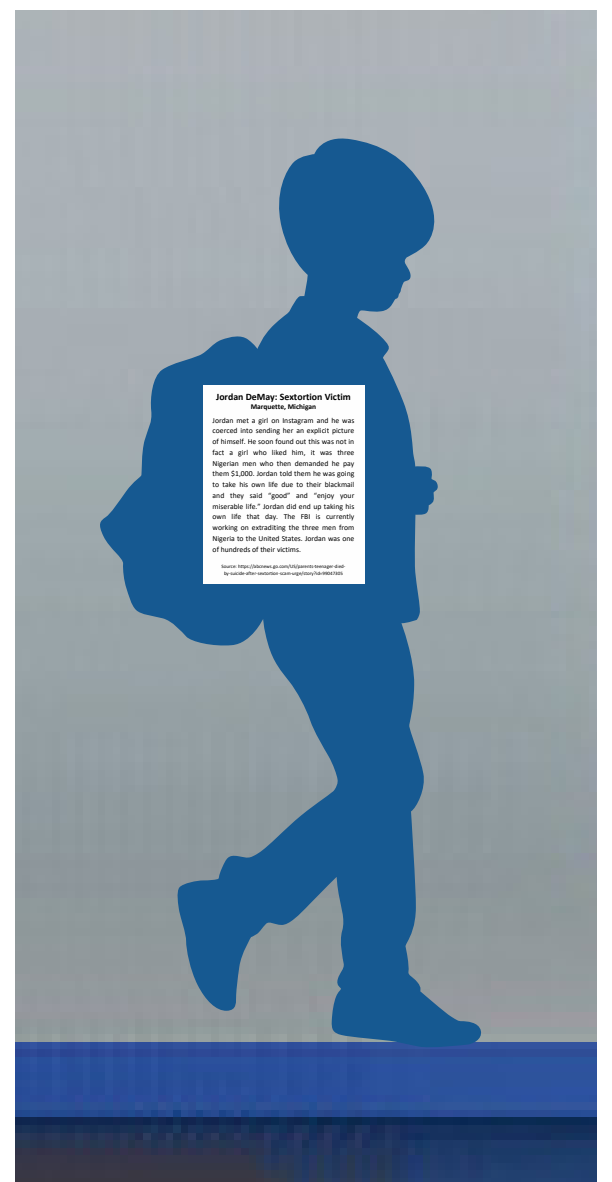
Sample 1



Sample 2



Sample 3



1





3





5



